

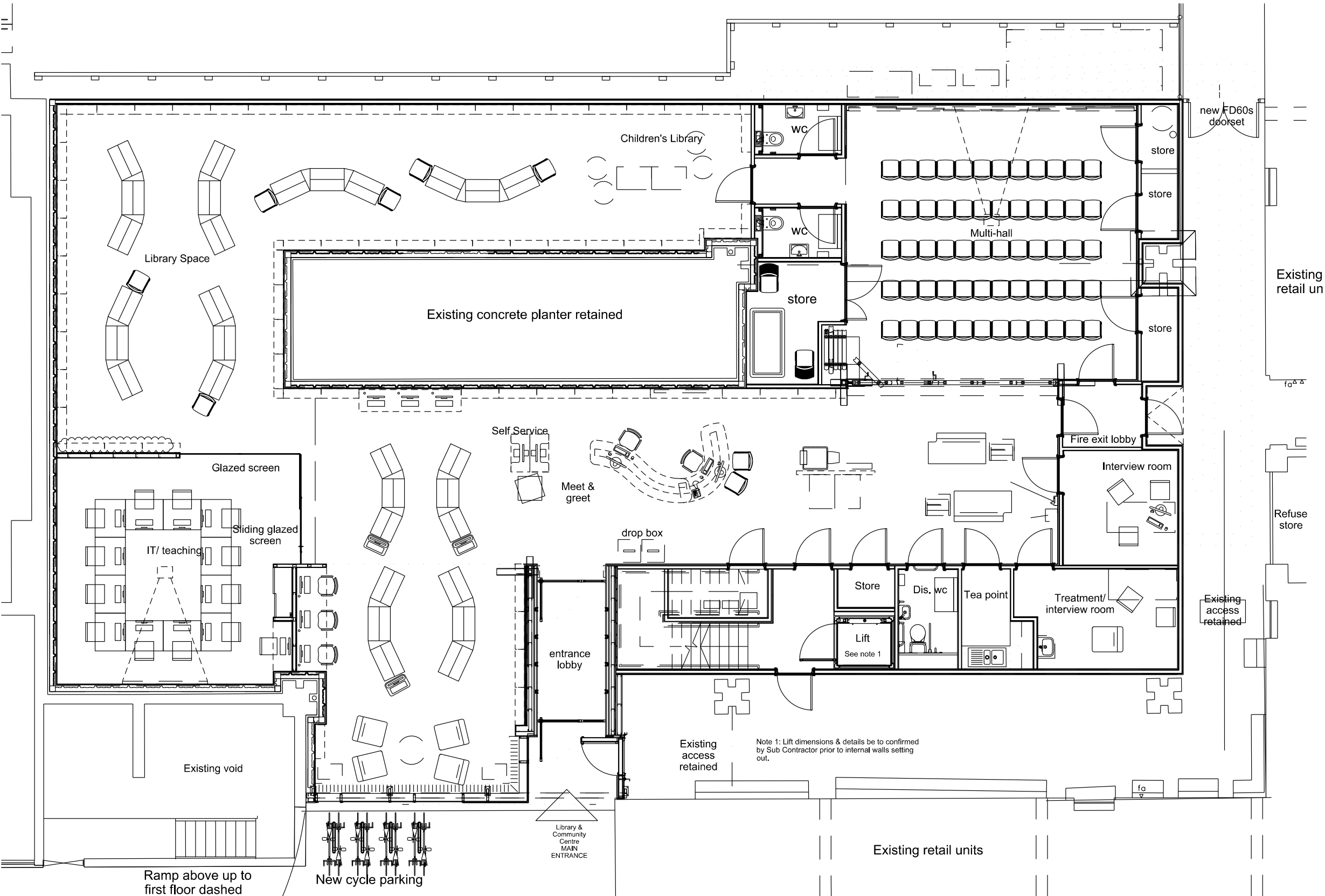


## ARTIZAN STREET LIBRARY ARTS COUNCIL BID

September 2021

**reForm**  
ARCHITECTS

# EXISTING PLAN



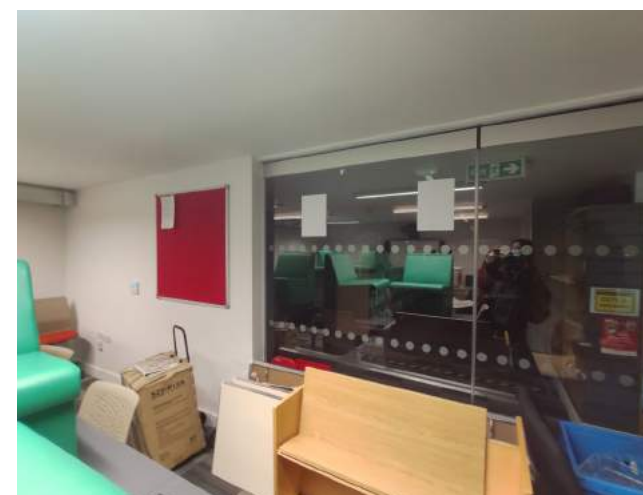
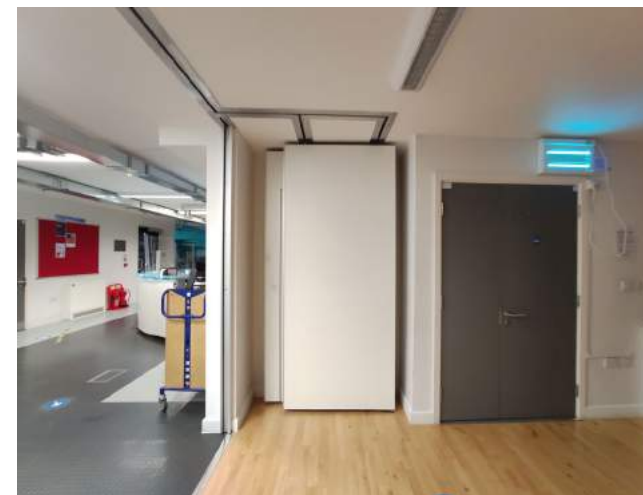
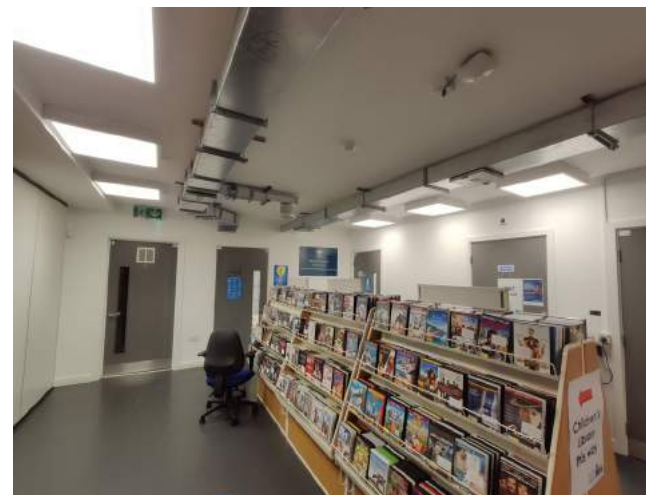
NOT TO SCALE



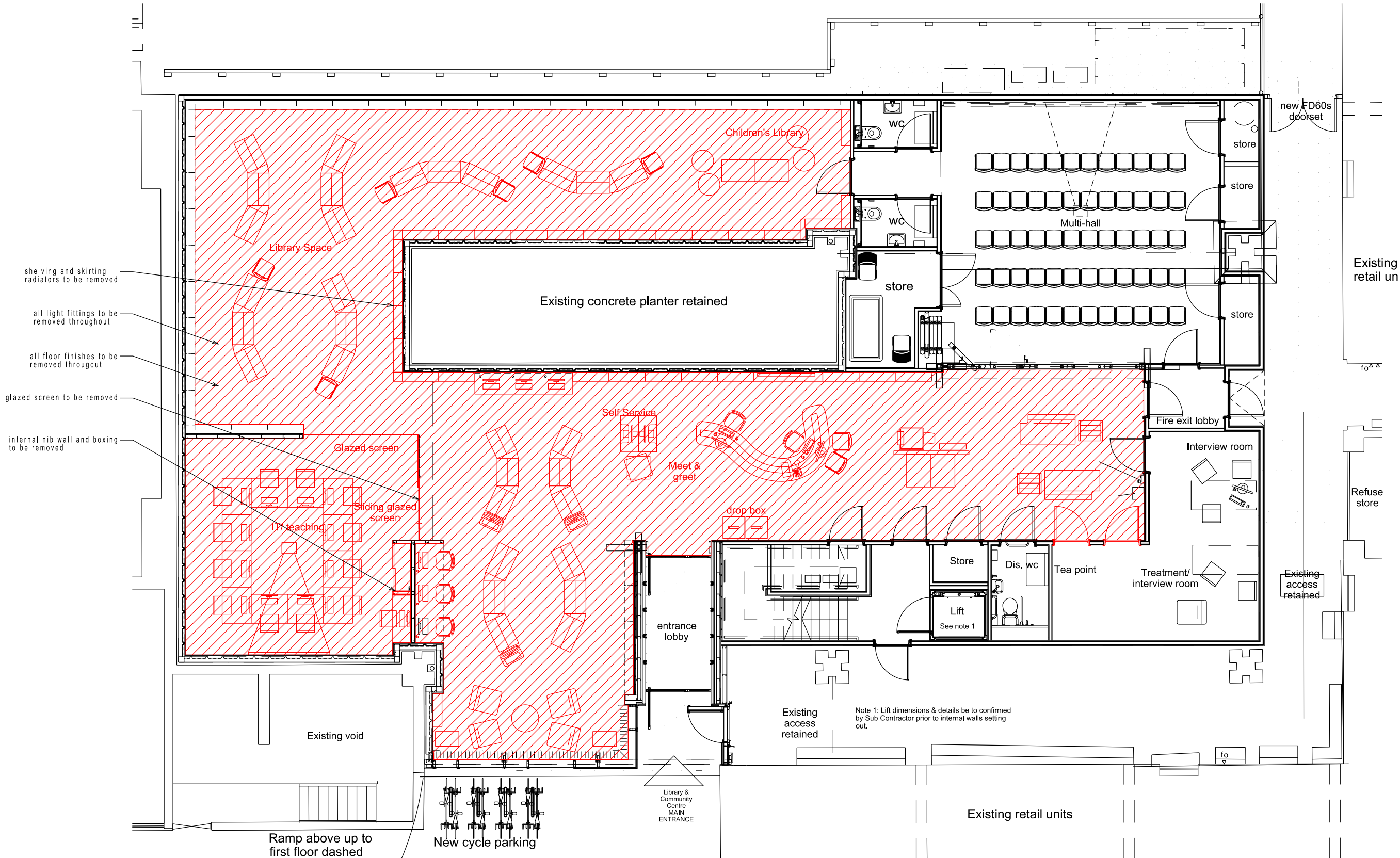
# EXISTING PHOTOS



The existing library is situated over the lower two storeys beneath the Middlesex Estate in the City of London. This bid proposal deals only with the library space, which is situated on the ground floor. The existing library suffers from low ceilings and a lack of daylight. In addition, there is no consistency in the flooring finishes or light fittings, which creates a fragmented and dour interior.



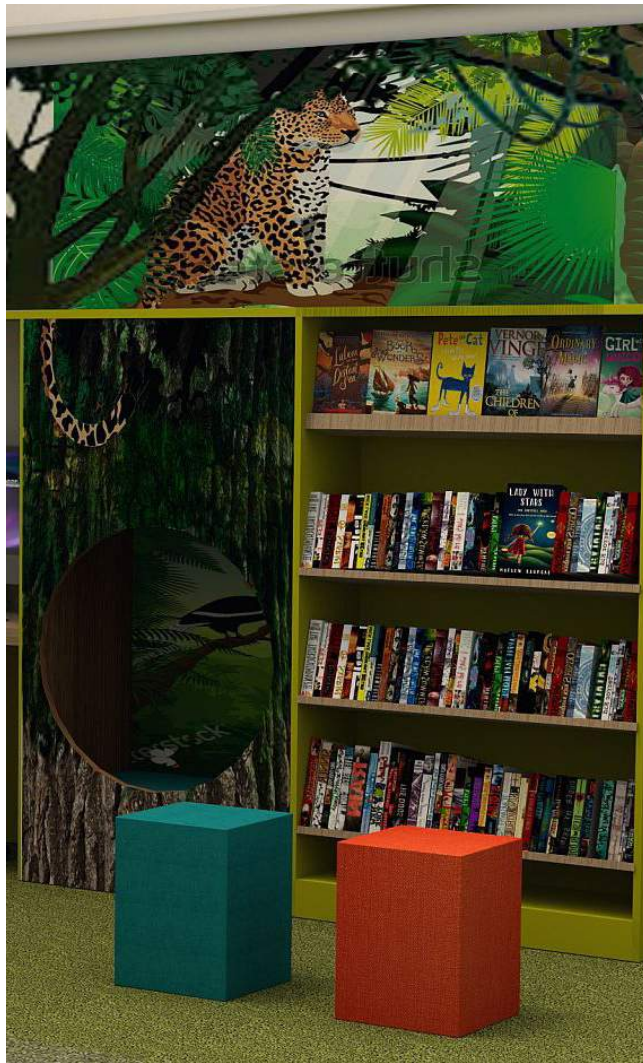
# DEMOLITION PLAN



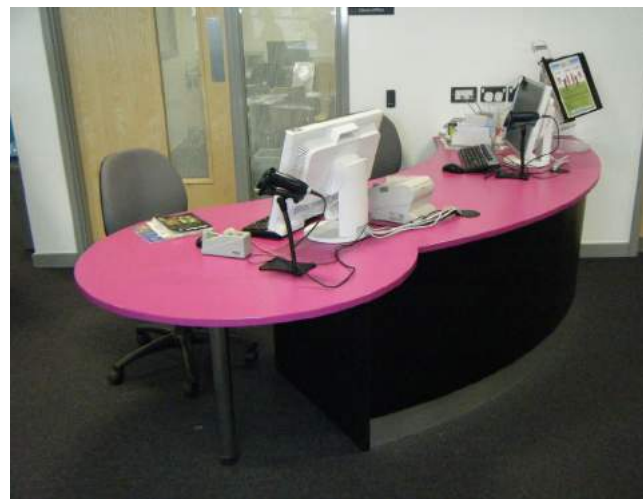
NOT TO SCALE



# PROPOSED FURNITURE

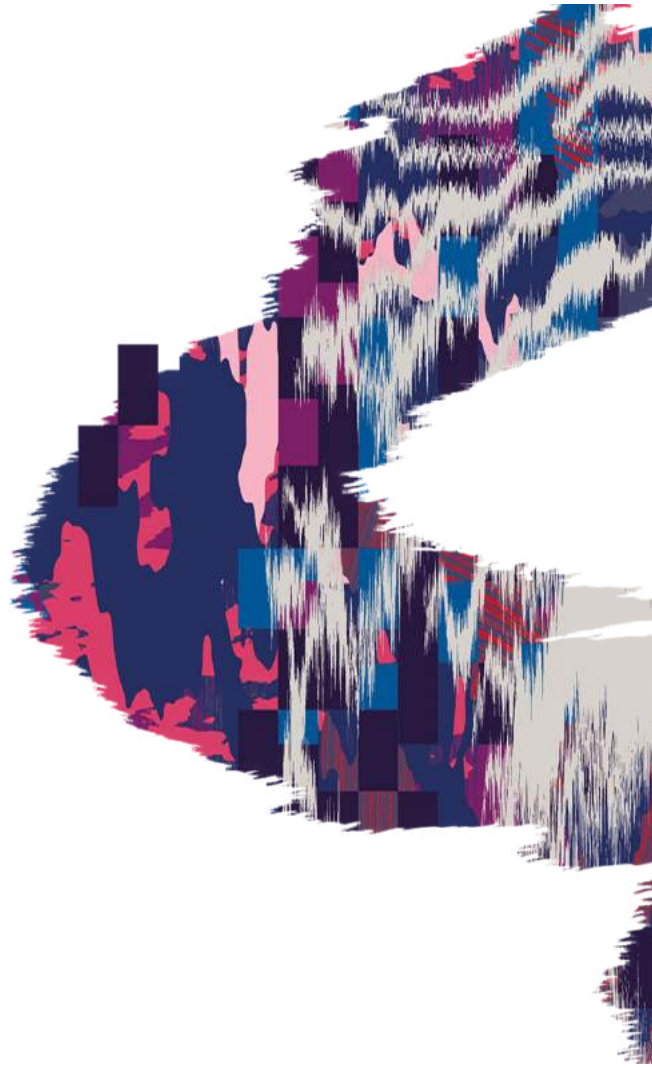


Opening the Book Library Designers have developed a furniture layout to create a feeling of warmth and welcome, different from formal straight rows. The children's area has been renewed and re-located to attract families with young children.





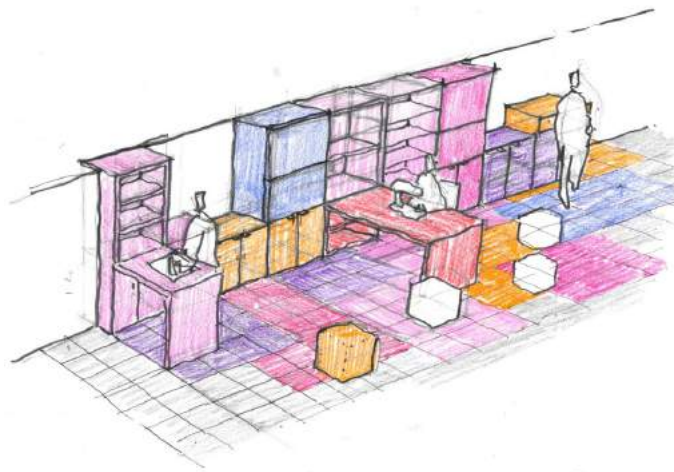
# HUGUENOT INFLUENCE



The Huguenots – French Protestants in the 16th and 17th Century – were this country's first refugees. Many settled in London, primarily in Spitalfields and the City, close to the Artizan Library. They revitalized the silk weaving industry in the area, and created a rich legacy of silk patterns renowned around the world. It is hoped that the new Artizan maker space and lounge will draw upon this history of craftsmanship, supporting upskilling and creativity for the local population.

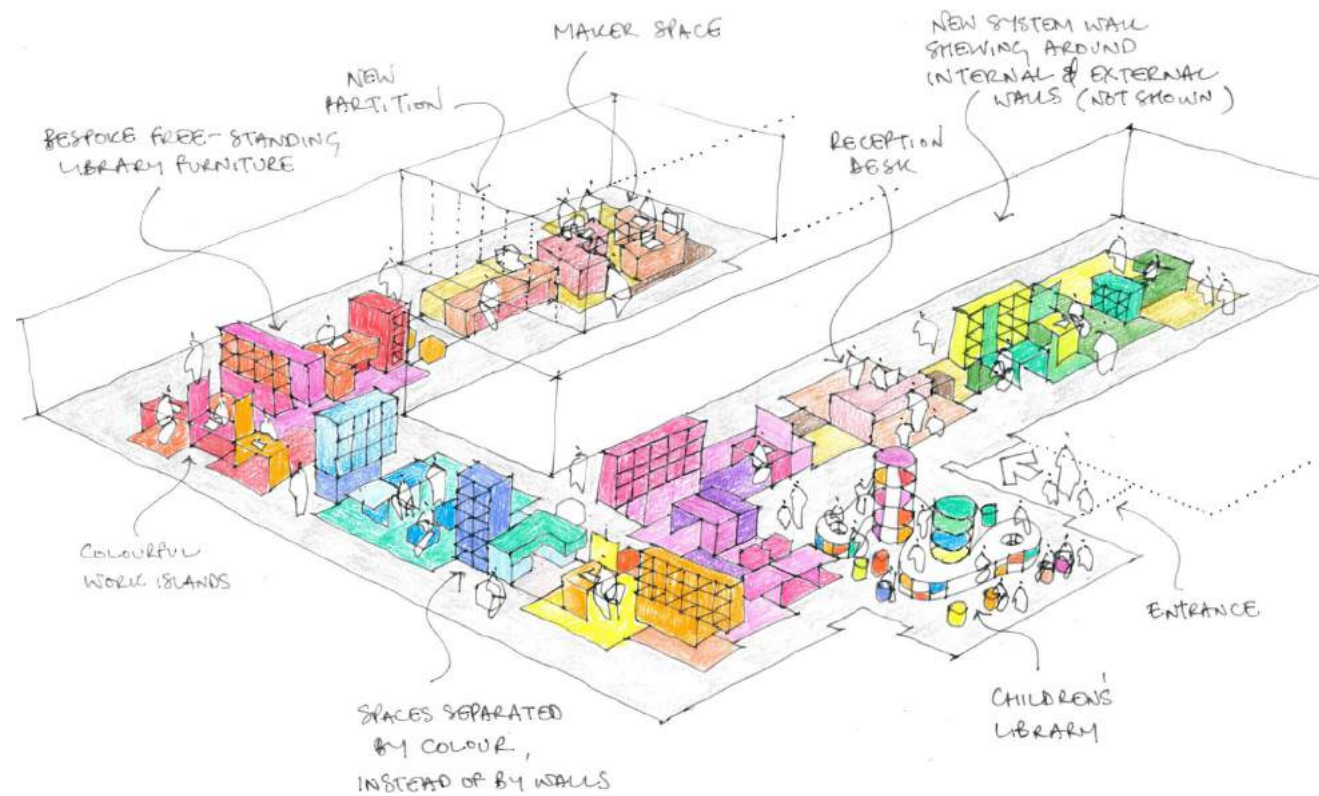






The new design proposes placing a new Artizan Lounge at the front of the library and new Artizan Maker Space at the rear. People will be able to make noise and create pieces of work undisturbed at the rear, whilst their work can be displayed and enjoyed in the lounge. The existing IT suite would be removed and the space re-purposed as the children's library.

The different areas of the library would be separated by colour instead of walls, and the children's library would be a kaleidoscopic celebration of learning!





# ARTIZAN LIBRARY - SKETCH VIEW





# ARTIZAN MAKER SPACE - SKETCH VIEW



A series of coloured cabinets with fold-down tables and desks at varying heights would allow the creation of new maker spaces. This would allow embroidery, sewing, digital printing and other activities to take place. Equipment and materials would be safely secured in the furniture once closed, and the bold vibrant colours of the furniture and flooring would match the colours of the Artizan Lounge at the front of the library, creating a strong visual link between the two spaces.





#### General Notes:

1. All dimensions to be checked on site.
2. Do not scale from this drawing.
3. Drawing to be read in conjunction with all other relevant SCA and consultant information.

© Copyright: neither this document or any information it contains may be copied or communicated to third parties without written permission from SCA

P02	REVISED DWG	JV	AD	20.09.21
P01	PRELIMINARY ISSUE	JV	AD	07.09.21
Rev	Notes	BY	Check	Date
REVISIONS				

**reForm**  
ARCHITECTS

The Old School, 48a Union Street, London, SE1 1TD  
Tel 020 3696 5700  
enquiries@reForm-architects.london

Drawing Status: PRELIMINARY

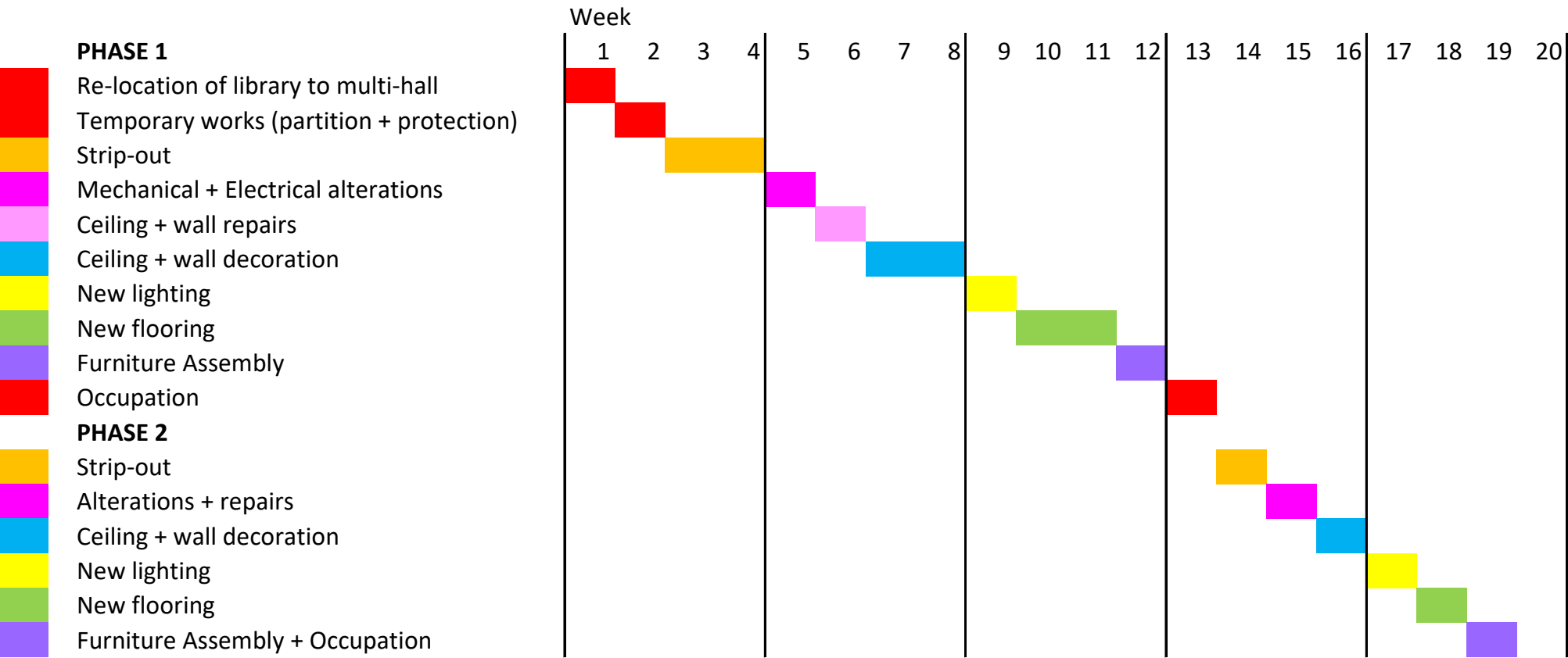
Project:  
Artizan Street Library  
Drawing Title:  
Proposed General Arrangement Drawing

job no.	drawing no.	revision	stage
692	(20)_200	02	02
scales	size	drawn	date
1:100	A3	JV	20.09.21



# PROGRAMME

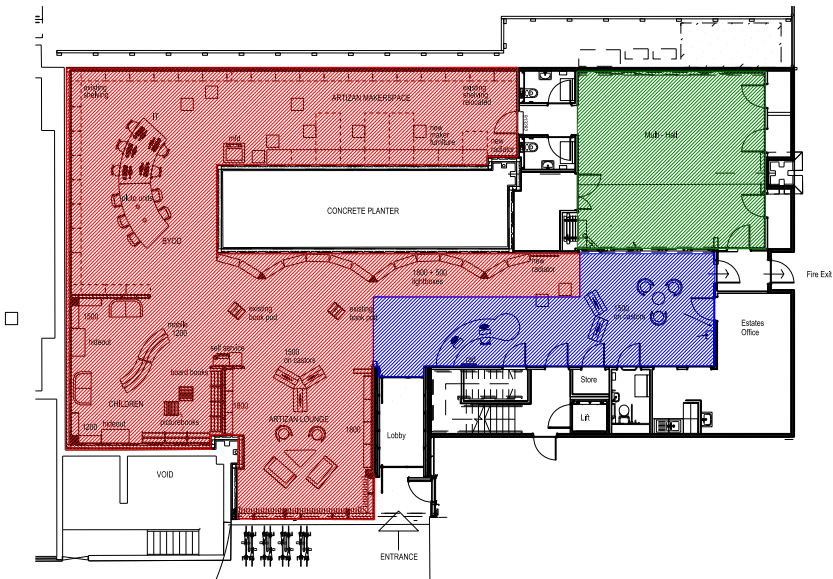
## INDICATIVE OVERALL PROJECT PROGRAMME



An indicative programme is provided below showing an anticipated timetable for the construction phase of the project.

The programme assumes that a temporary library could be provided in the multi-hall during phase 1, and that the existing estates office could remain in use. During phase 2 the estates office would need to be provided with alternative temporary accommodation. The programme anticipates the closure of the library for 2 weeks at the start of the project, and for 1 week at the end of phase 1.

- PHASE 1
- PHASE 2
- TEMPORARY LIBRARY





# ARTIZAN STREET LIBRARY APPENDICES